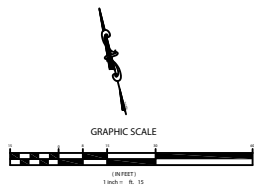
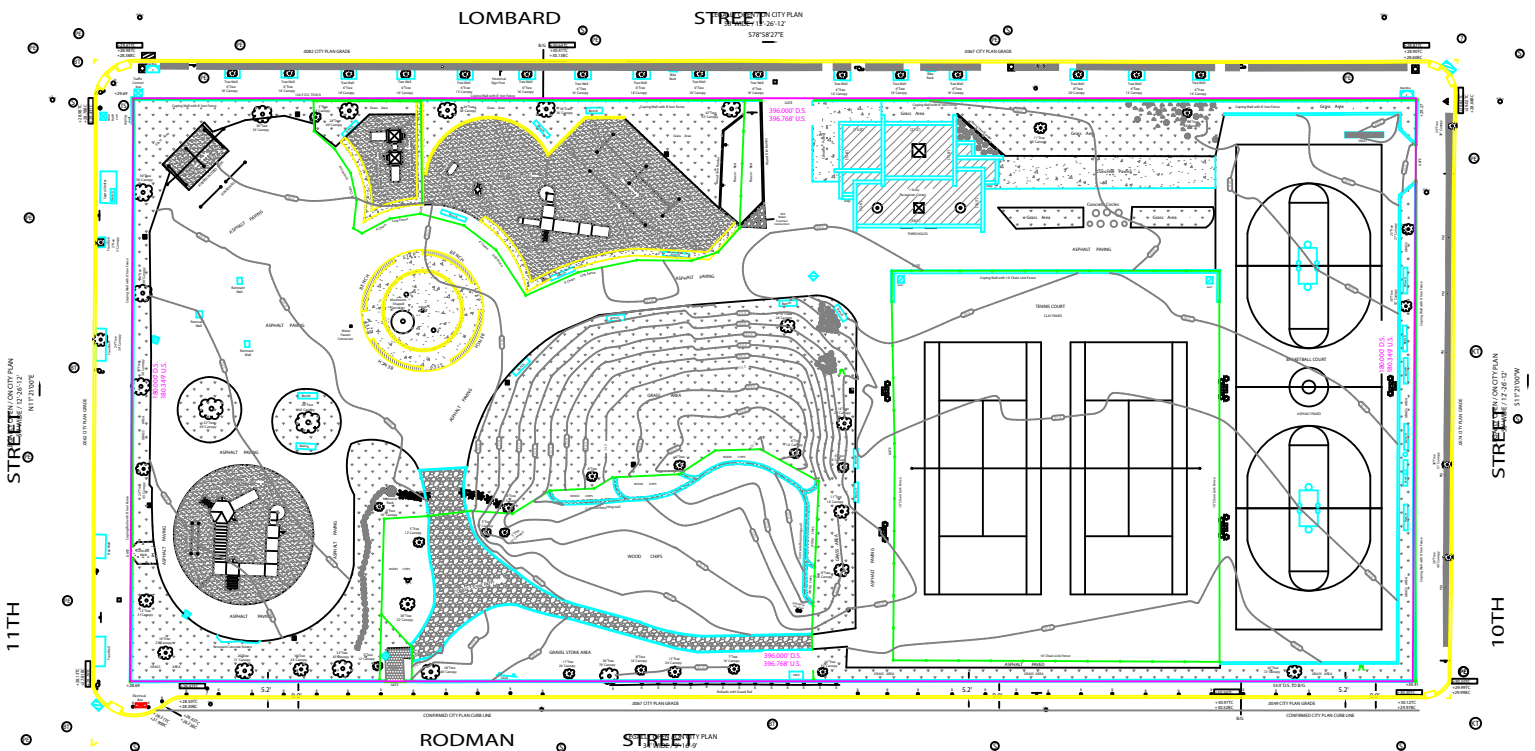


EXISTING PHYSICAL CONDITIONS & TOPOGRAPHY



| LEGEND | |
|--------|--|
| | TRAFFIC SIGNAL MANHOLE (STREETS) |
| | BELL TELEPHONE MANHOLE (STREETS) |
| | PECO ENERGY MANHOLE (STREETS) |
| | HYDRO-TEL TELEPHONE MANHOLE |
| | SANITARY/COMBINATION GAS/WATER MANHOLE |
| | WATER MANHOLE |
| | UNDERSIZED MANHOLE |
| | WATER SHUT OFF |
| | GAS SHUT OFF |
| | VENT CAP (GAS SERVICE) |
| | 6000 WATER FOUNTAIN |
| | FIRE HYDRANT |
| | CATCH BASIN/GARAGE INLET |
| | 2 MAIL DROP BOXES |
| | LIGHT STANDARD w/ CONIC BASE |
| | FLOODLIGHT STANDARD w/ CONIC BASE |
| | TRAFFIC SIGNAL |
| | UTILITY POLE |
| | TROLLEY WIRE SUPPORT POLE (GSP) |
| | OVERHEAD FENCE |
| | SIGN POST |
| | BOLLARD |
| | PARKING METER |
| | STORM DRAIN |
| | LOW CONCRETE PLANT |
| | CONCRETE PAVING |
| | BRICK |
| | TREE |
| | SHRUB |
| | GRASS AREA |
| | TILED DRIVEWAY |
| | BUILDING FOUNDATION |
| | CITY PLAN ELEVATION |
| | SPOT ELEVATION |
| | PHYSICAL CONDITIONS |
| | UTILITY LINES |

NOTES:

Attention is called to the existing conditions in the Philadelphia Code as amended. Plans to amend the Code are in process.

Plan 47, 2nd Edition, Part 1, 14883 Area.

Plan made in accordance with the Philadelphia Code.

All dimensions shown are in feet unless otherwise noted.

All elevations are based on the Philadelphia vertical datum.

Undersized manholes are not to be used for this purpose.

This plan is for use for this purpose only.

The preparation of this plan by the 2nd Survey District does not imply approval of other city agencies.

CITY PLAN #108 publishes its bearing for this block, the bearings used on this plan and any other plan or map are correct as shown on this plan only.

All dimensions are based on the Philadelphia vertical datum.

Benches located on NE of 10th & Lombard St., 141 Lombard St. and 10th & Market St. are shown on this plan. The location of these benches is shown on this plan. The location of these benches is shown on this plan.

Location of existing utility shown on this plan has been developed from utility records and field survey of the site. The accuracy regarding location and/or depth cannot be guaranteed.

PHILADELPHIA DEPT. OF STREETS
2ND SURVEY DISTRICT
1515 ARCH ST. PHILADELPHIA, PA. 19102
(215) 685-1864 FAX (215) 685-1851

SURVEY & PLAN OF PROPERTY
(TOPOGRAPHICAL SITE PLAN)
1000-42 LOMBARD ST.
MADE FOR
DEPARTMENT OF PUBLIC PROPERTY
(REGISTERED OWNER)
1515 ARCH ST. PHILADELPHIA, PA. 19102
STH WARD PHILADELPHIA - PENNSYLVANIA

Drawn By: DKW. SCALE: 1" = 15'. CHECKED BY: M.A.L. DRAWING No.: 029P2010

NOT TO SCALE