



1501-05
WALNUT STREET
Philadelphia, PA

30,000 SF
Retail Redevelopment
on Philadelphia's famed high street

Leased by



Redeveloped by





For more information

215.568.2600 ♦ MSCretail.com
@MSC_Retail

Douglas Green ext. 718
dgreen@MSCretail.com

Brittany Goldberg ext. 723
bgoldberg@MSCretail.com

Andrew Shpigel ext. 715
ashpigel@MSCretail.com

Michael Salove ext. 717
msalove@MSCretail.com



♦ 1501–05 WALNUT STREET

Philadelphia, PA

3 Philadelphia Overview & Demographics

4 Walnut Street Strip Map

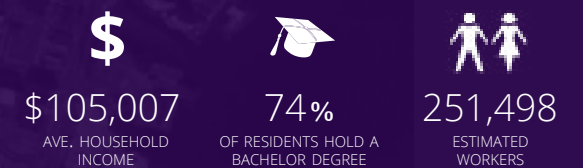
5-17 Conceptual Renderings & Proposed Floor Plans

18 Summary

THE NEIGHBORHOODS of Philadelphia

Philadelphia is a vibrant, international city made up of highly connected unique neighborhoods, each with a distinctive personality. Centrally positioned at the epicenter of it all is 1501-05 Walnut Street—a blank canvas for unlimited redevelopment possibilities across 30,000 square feet of prime retail/restaurant space.

CENTER CITY TRADE AREA at a glance*



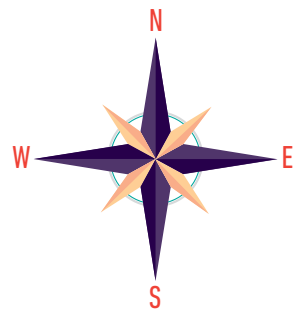
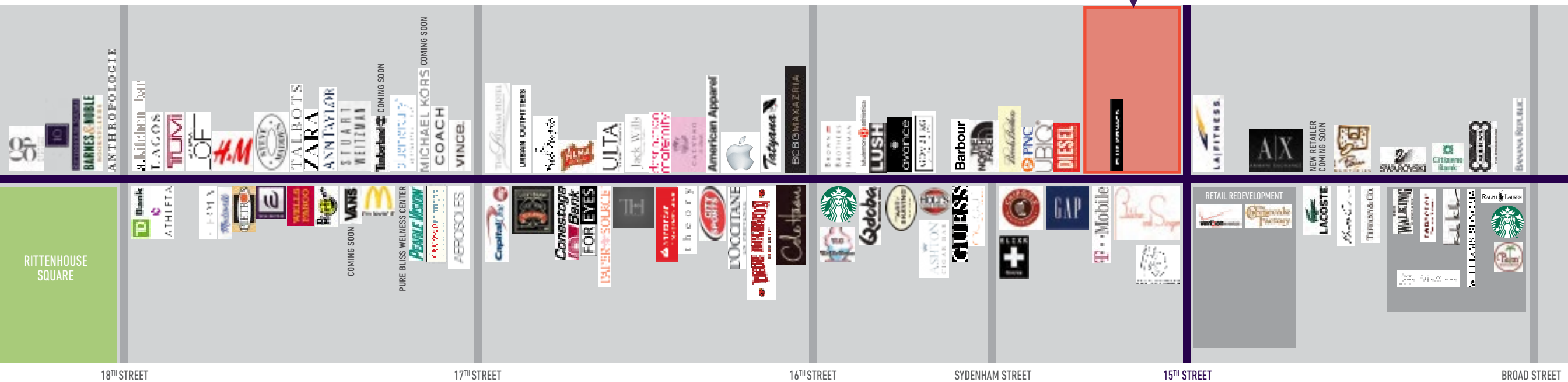
Situated in the heart of Philadelphia's famed high street, the corner of 15th and Walnut Streets provides unmatched access to the ultra-affluent residential base of Rittenhouse Square, the acclaimed arts district on Broad Street ("Avenue of the Arts"), Philadelphia's flourishing tourism base and several employee-dense office corridors. It is truly a "live/work/play" urban core, and retailers are clamoring to gain access. Over the past five years, Philadelphia has welcomed Barney's Co-Op, Intermix, Lululemon, Apple, Theory, Madewell and Michael Kors; add in a splash of fast-fashion with Uniqlo, two H&Ms and Nordstrom Rack and you have a diverse and thriving retail scene.

*Source: CenterCityPhila.org, 2013



WALNUT STREET STRIP MAP

19th Street to Broad Street



Join these powerful international brands —

theory



lululemon  athletica

COACH

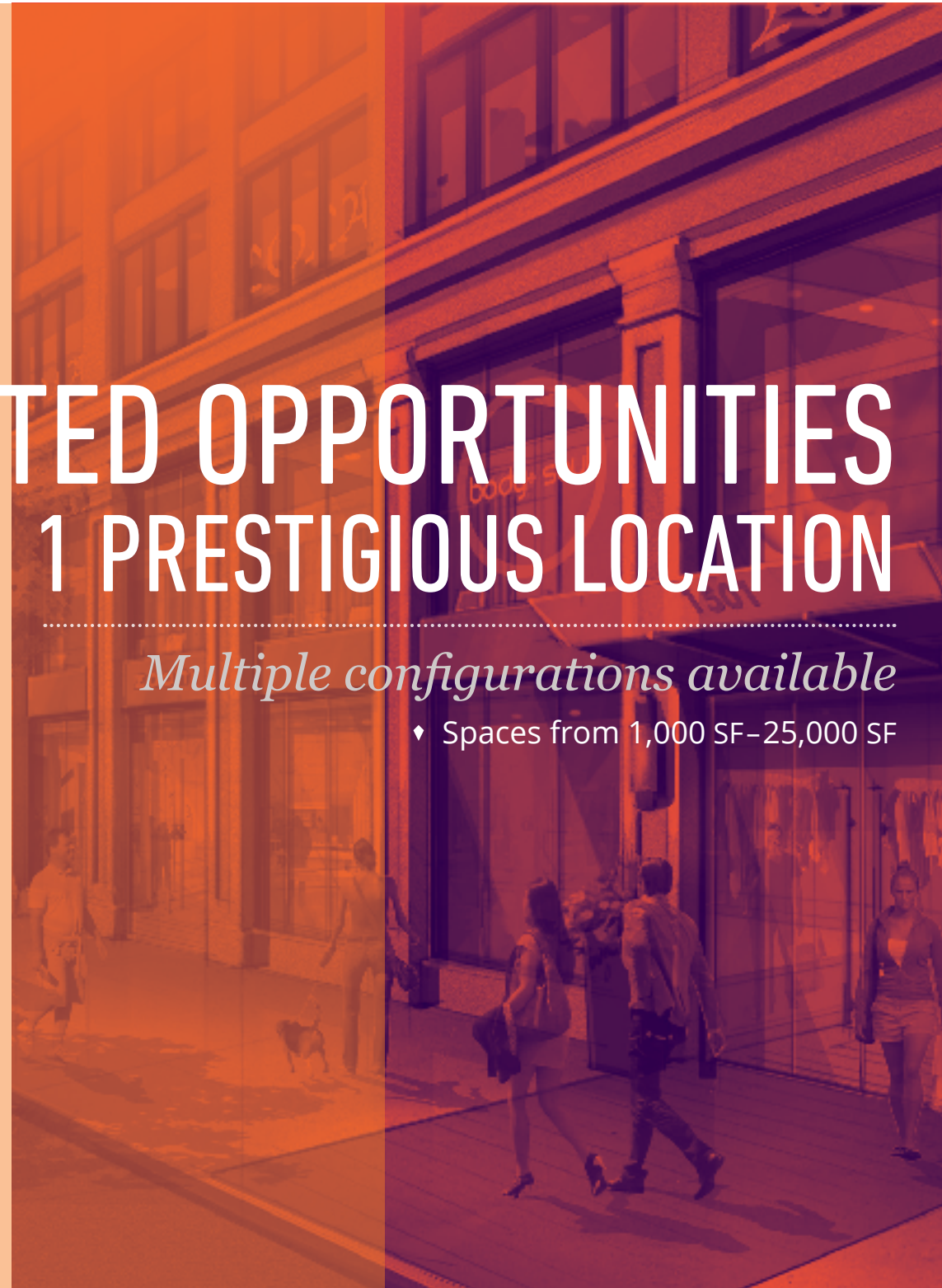
MICHAEL KORS



UNLIMITED OPPORTUNITIES 1 PRESTIGIOUS LOCATION

Multiple configurations available

◆ Spaces from 1,000 SF-25,000 SF





SPACE №1

1505 WALNUT STREET

2,200 SF on Ground Floor

700 SF Mezzanine

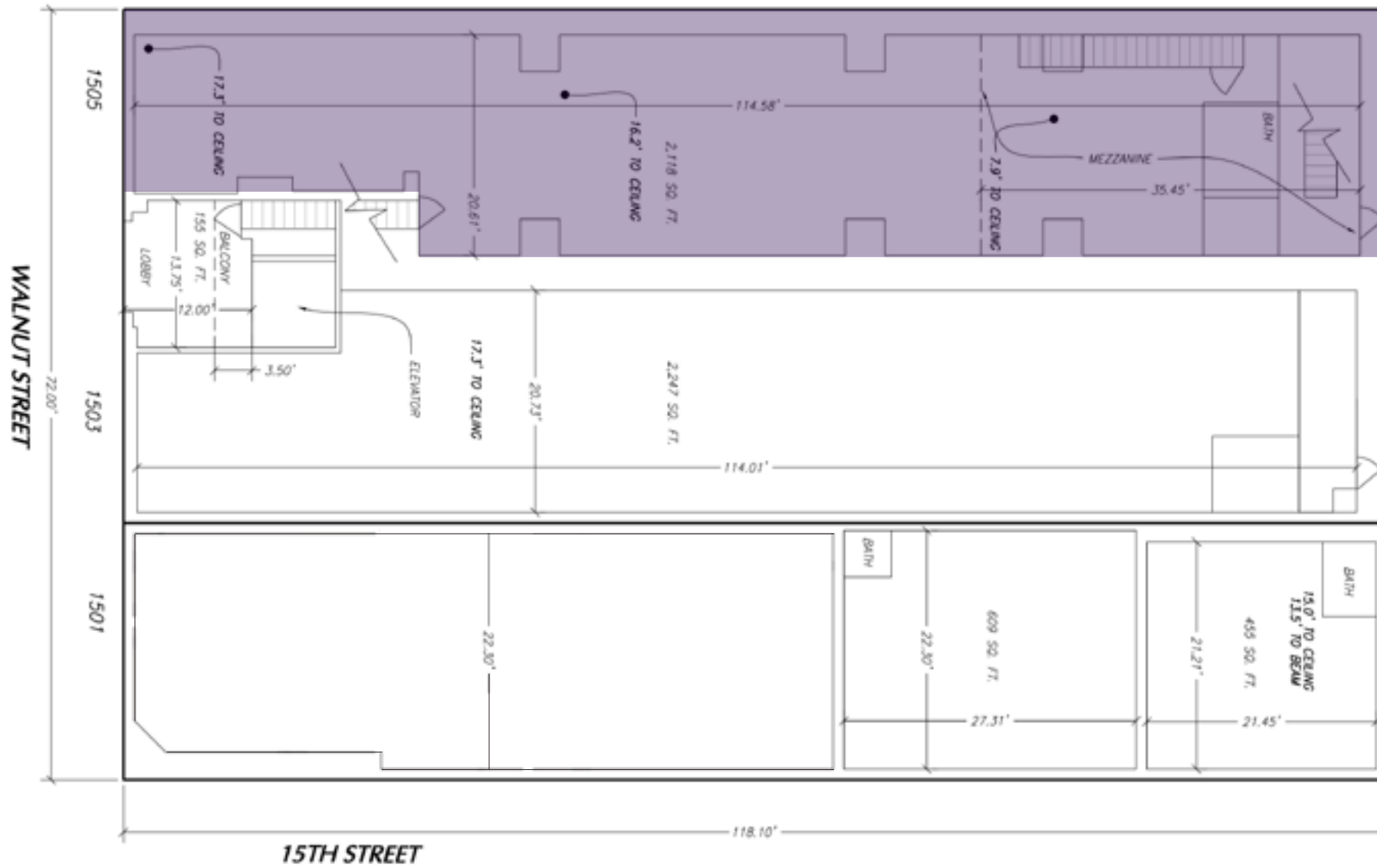
Full Basement Available for Storage



18' of Walnut St. Frontage

17' Ceiling Heights

Adjacent to Diesel & Club Monaco



SPACE No 1

1505 WALNUT STREET
 2,200 SF on Ground Floor
 700 SF Mezzanine
 Full Basement Available for Storage



SPACE N^o2

1505 WALNUT STREET

10,000 SF – Floors 2 & 3
5,000 SF Floor Plates



Dramatic Walnut St. Entrance with
Grand Staircase to Upper Floors

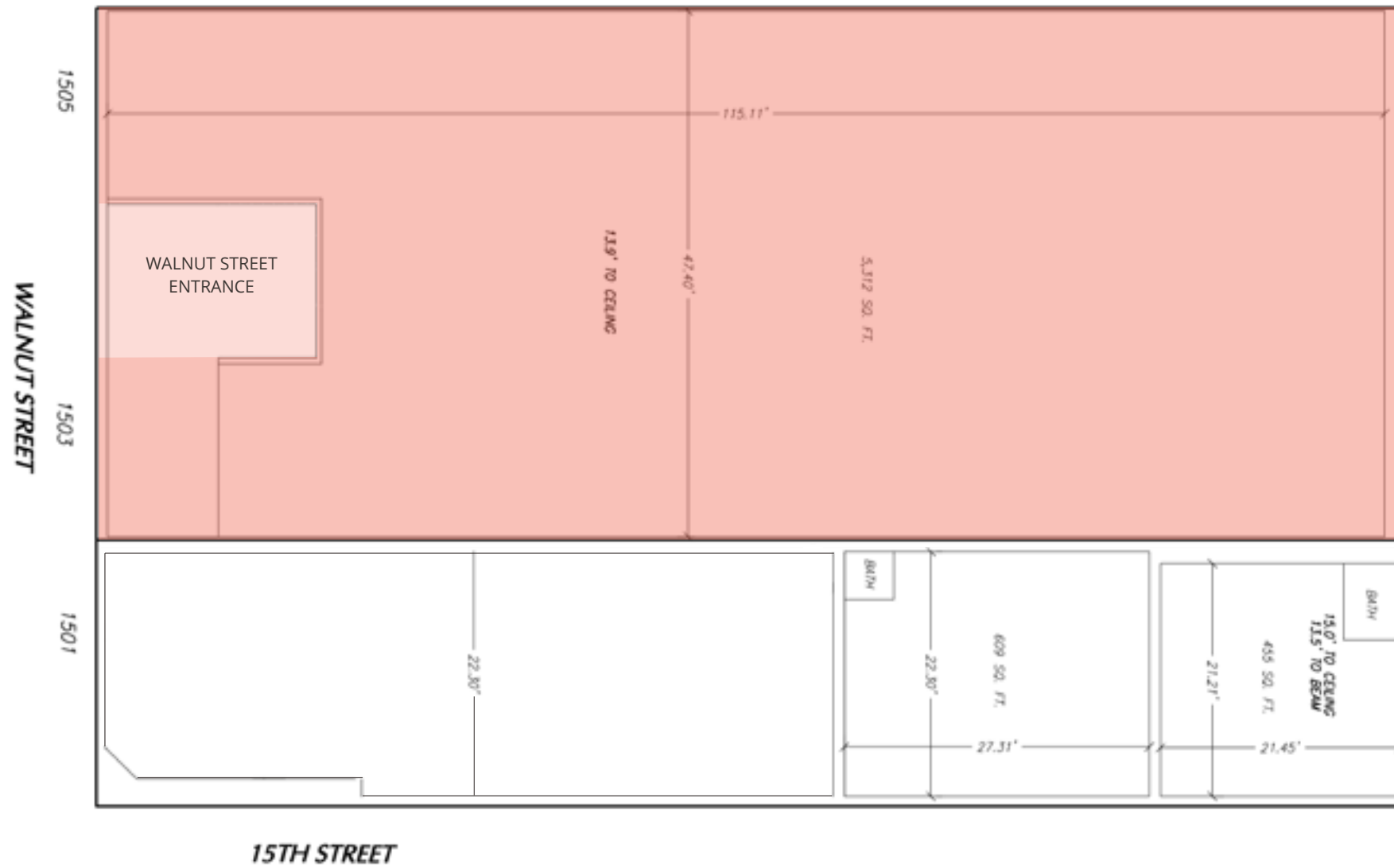
Opportunity for true
Walnut St. Presence

Flagship Signage Opportunities

14' Ceiling Heights

SPACE No 2

1505 WALNUT STREET
10,000 SF – Floors 2 & 3
5,000 SF Floor Plates



SPACE №3

1501 WALNUT STREET

1,000–1,200 SF on Ground Floor

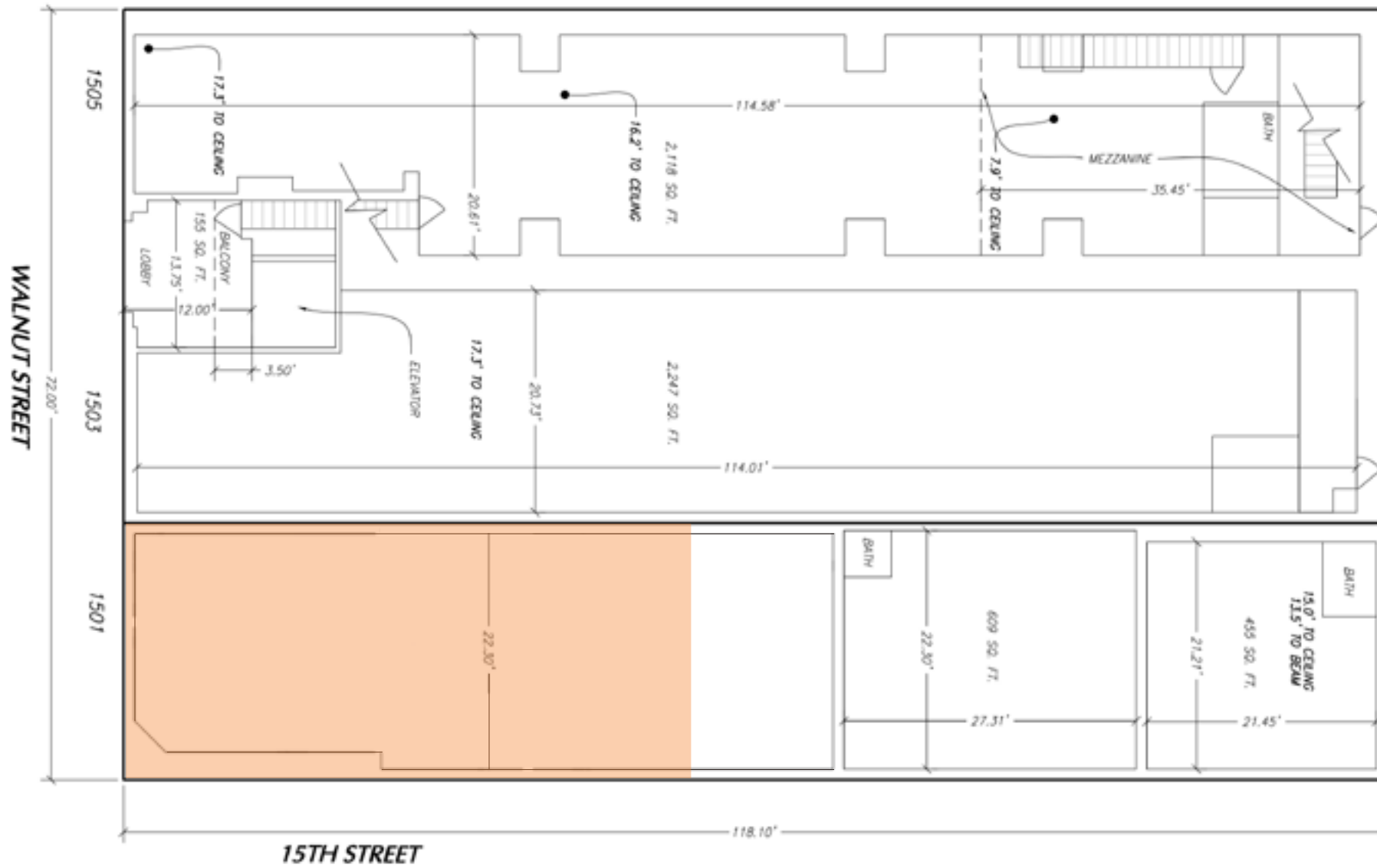


Rare & Prominent
Corner Retail Space

22' of Walnut St. Frontage

15' Ceiling Heights





SPACE №3

1501 WALNUT STREET
 1,000 SF-1,200 SF on Ground Floor



SPACE Nº4

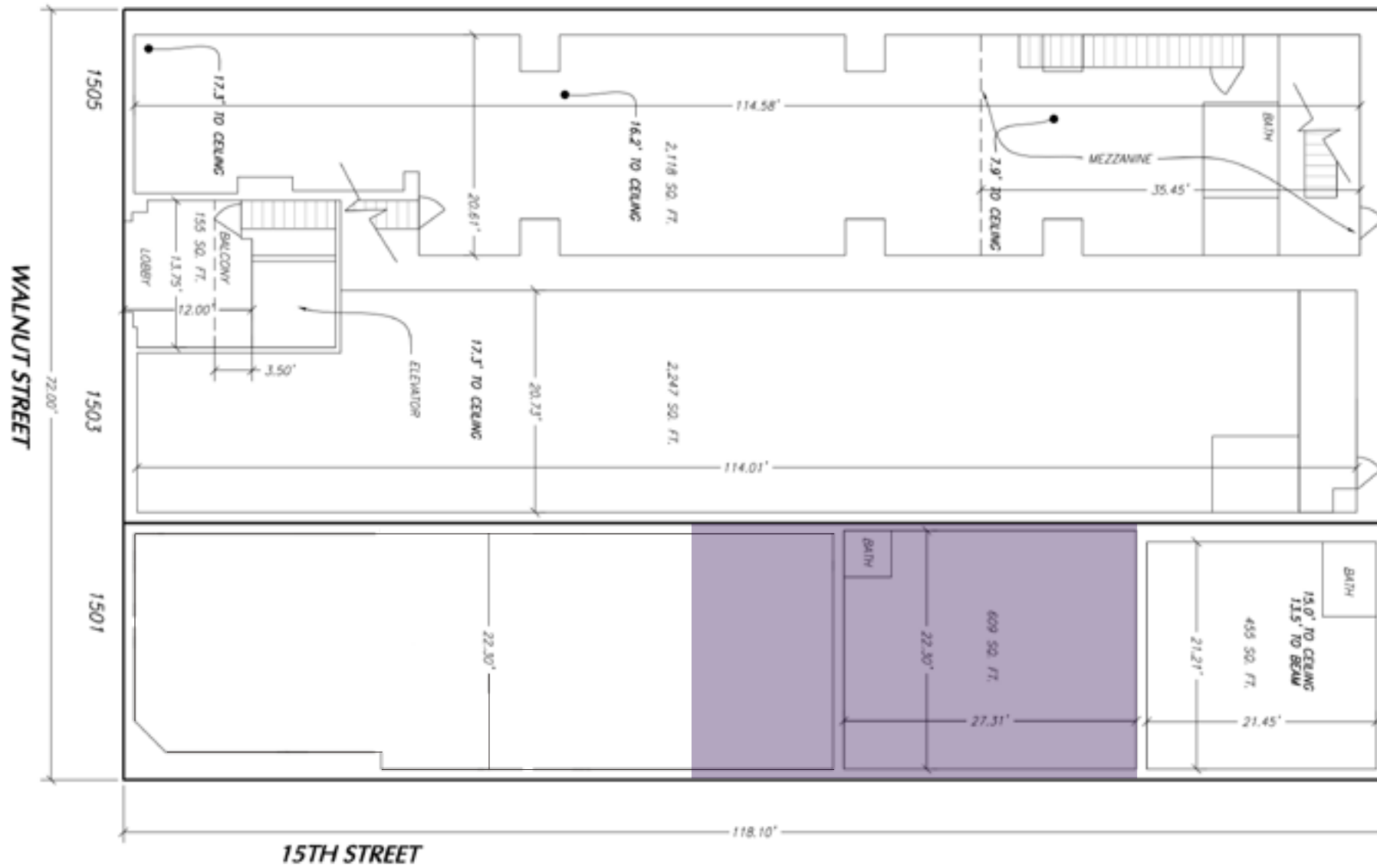
140-42 S. 15TH STREET

800-1,000 SF on Ground Floor



50' of Frontage Along 15th St.

15' Ceiling Heights



SPACE No 4

140-42 S. 15TH STREET
 800 SF-1,000 SF on Ground Floor

SPACE Nº 5

136 S. 15TH STREET

2,300 SF on 2nd Floor



Opportunity for Branded Ground Floor Entrance on 15th St.

Prominent Window Lines Looking Over 15th & Walnut Streets

Ample Frontage on Walnut St. & down 15th St.

13' Ceiling Heights





SPACE No 5

136 S. 15TH STREET
2,300 SF on 2nd Floor

SPACE Nº6

1501 WALNUT STREET

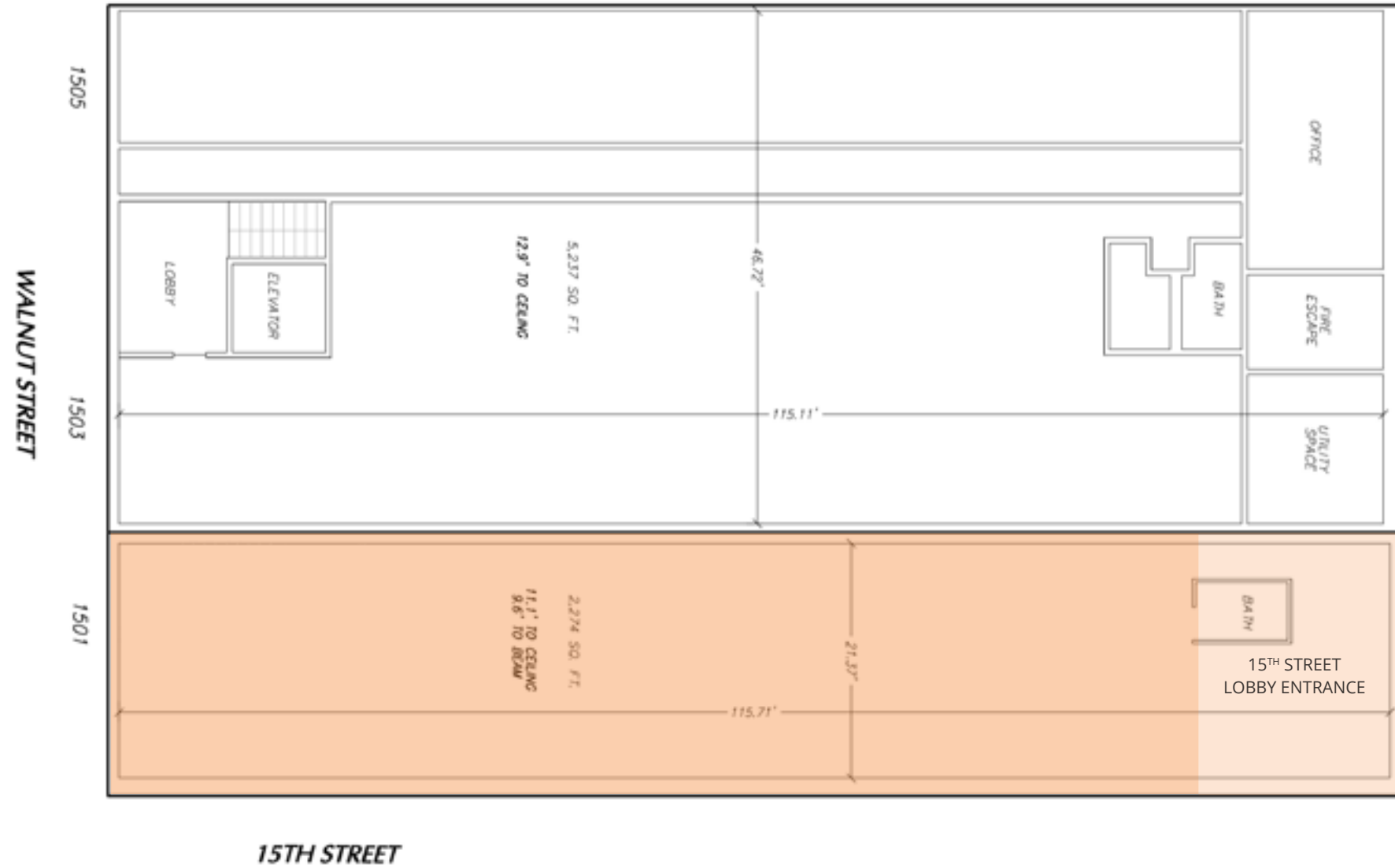
2,300–6,900 SF Office/Retail
on Floors 3–5

2,300 SF Floor Plates

◆
Lobby Access off of 15th St.

11' Ceiling Heights



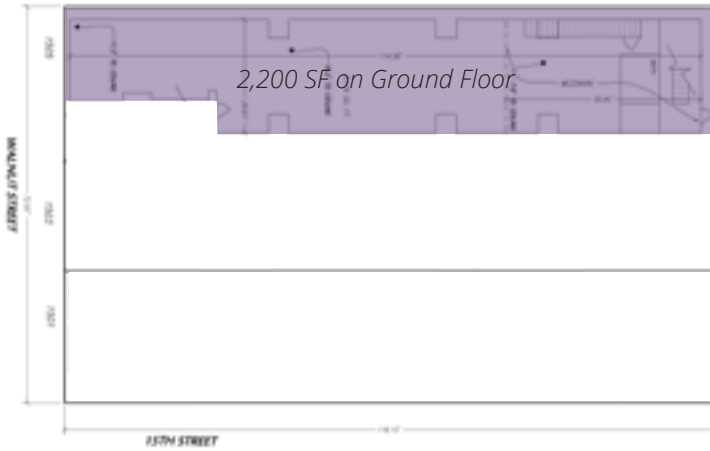


SPACE No. 6

1501 WALNUT STREET
 2,300 SF-6,900 SF on Floors 3-5
 2,300 SF Floor Plates

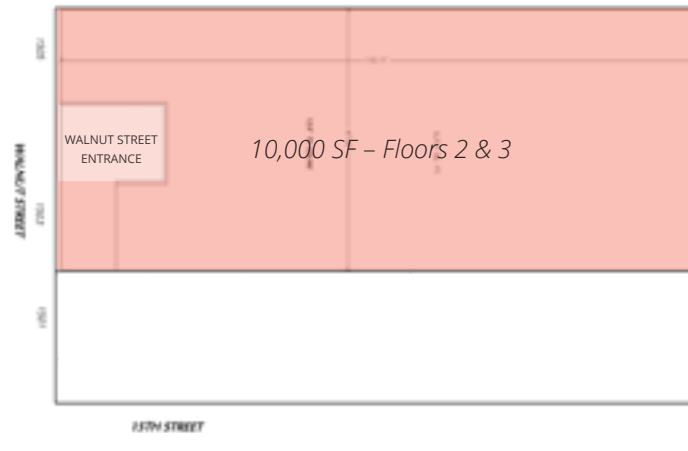
SPACE N^o1

1505 WALNUT STREET



SPACE N^o2

1505 WALNUT STREET



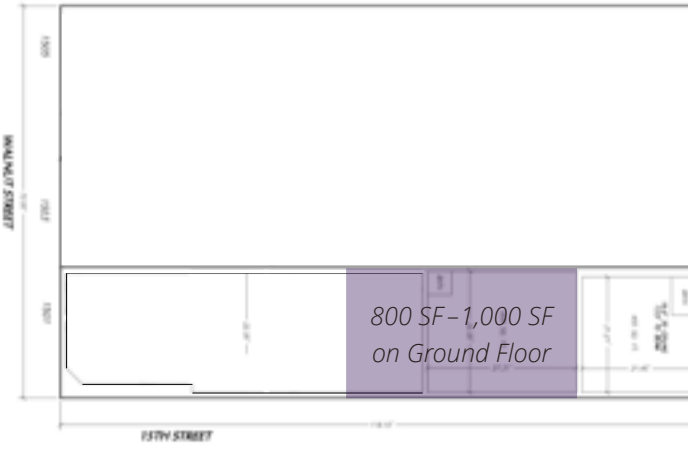
SPACE N^o3

1501 WALNUT STREET



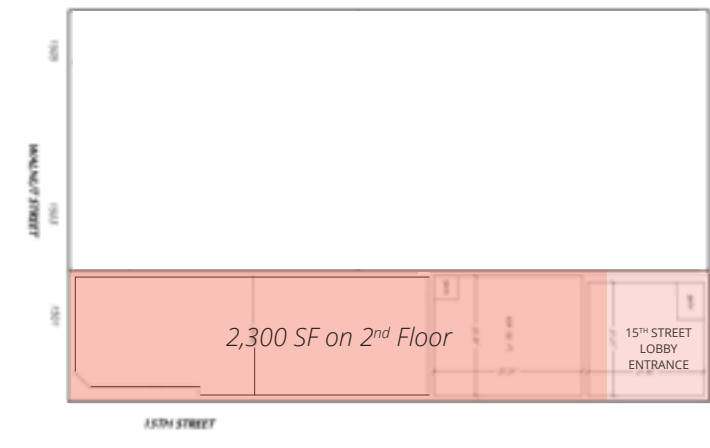
SPACE N^o4

140-42 S. 15TH STREET



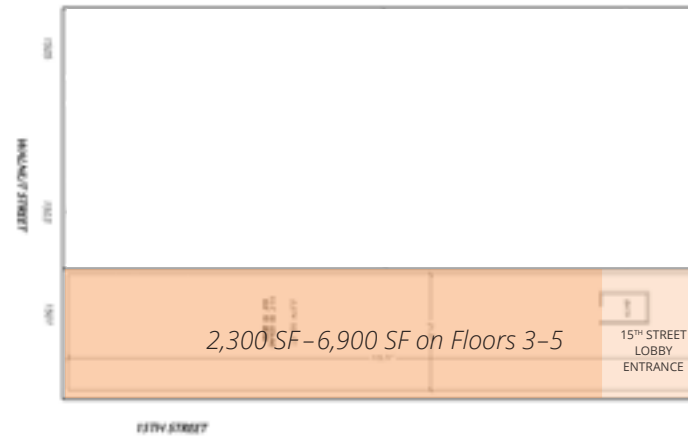
SPACE N^o5

136 S. 15TH STREET



SPACE N^o6

1501 WALNUT STREET



REDEVELOPMENT SUMMARY

*Unlimited Opportunities
1 Prestigious Location*



For more information

215.568.2600 ♦ MSCretail.com
@MSC_Retail

Douglas Green ext. 718
dgreen@MSCretail.com

Brittany Goldberg ext. 723
bgoldberg@MSCretail.com

Andrew Shpigel ext. 715
ashpigel@MSCretail.com

Michael Salove ext. 717
msalove@MSCretail.com

Leased by



Redeveloped by

